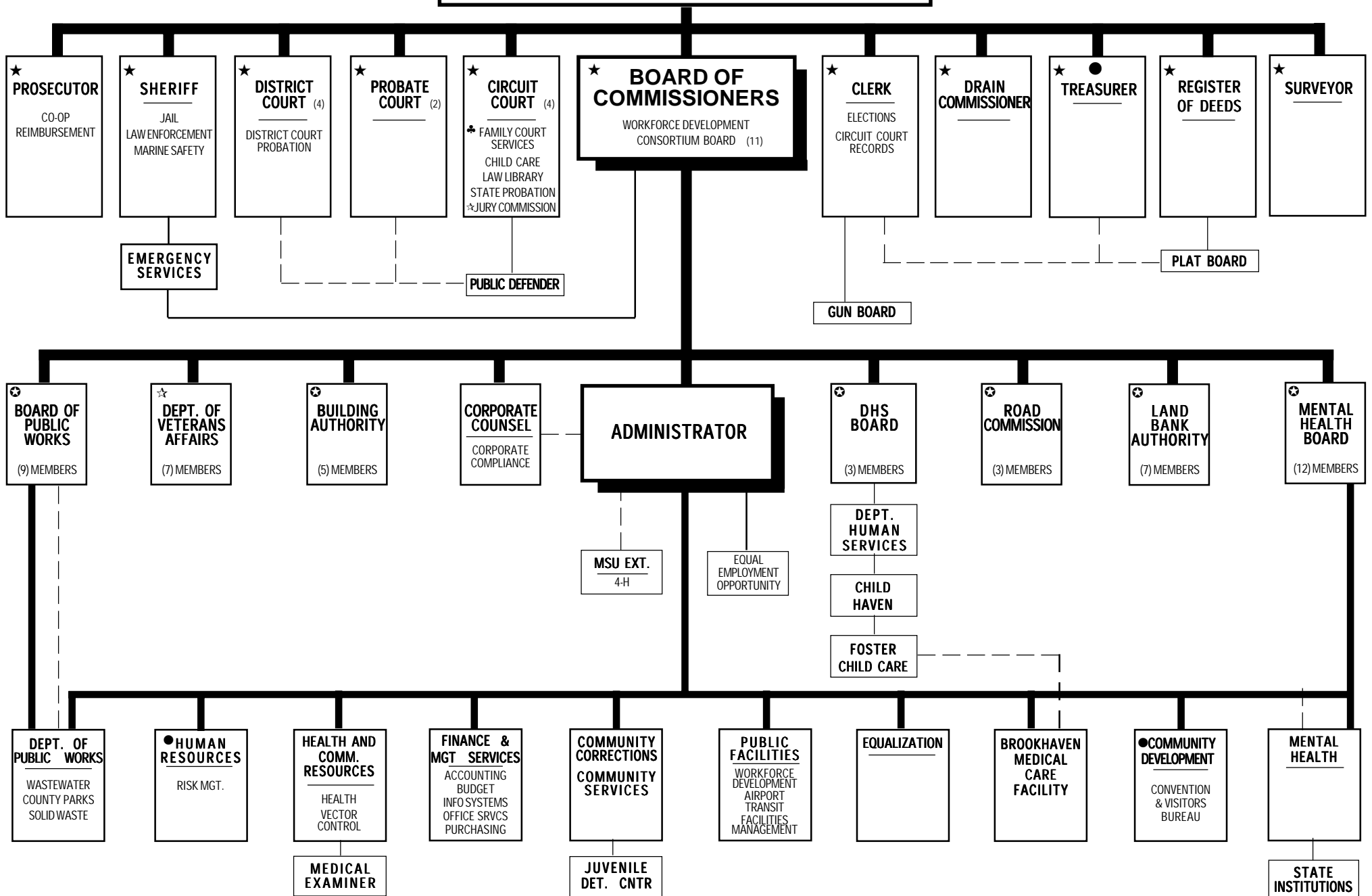


2009 ORGANIZATIONAL CHART

ELECTORATE MUSKEGON COUNTY



LEGEND: ★ ELECTED POSITION ☆ STATE APPOINTMENT OR CONCURRENCE ♻️ AUTONOMOUS OR SEMI-AUTONOMOUS FUNCTION (MEMBERS APPOINTED BY BOARD OF COMMISSIONERS) ● INTRAGOVERNMENTAL ♣ FAMILY COURT SERVICES CONSISTS OF: FRIEND OF THE COURT, FOC CO-OP REIMBURSEMENT, FAMILY COUNSELING SERVICE, JUVENILE COURT AND INTENSIVE PROBATION - - - RELATED FUNCTION (OPERATIONS)